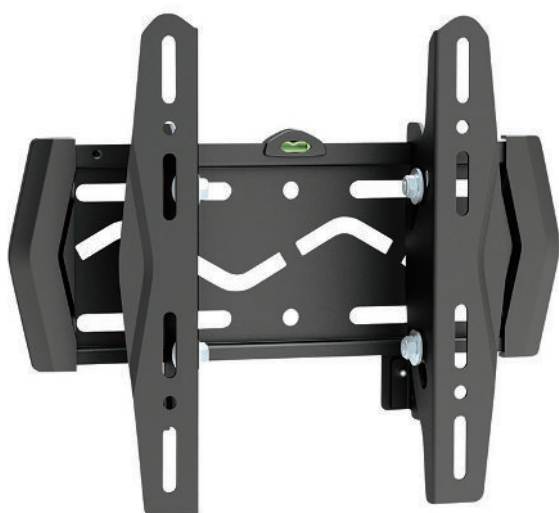


Lockable Tilting Landscape Wall Mount (Max VESA 200x200) - AS0822T



Features

- Designed for commercial and domestic use
- Suitable for most 23"-42" screens
- Maximum weight capacity: 30kg/66lbs
- Product size: 285x239x57mm
- Maximum VESA pattern: 200x200mm
- Maximum Hole pattern: 210x210mm
- No Tool Assembly allows assembling in minutes with no tools required
- Tilting range: -15°~+5°
- Anti-theft security feature (requires padlock)
- Integrated spirit level ensures level installation alignment

Specifications



* Excluding motorised products which have a 5 year warranty



Mount Type	Tilting Wall Mount
Mounting Pattern	Universal
Material	Steel
Product Size	285x239x57mm
Recommended Screen Size	23"-42"
Weight Capacity	30kg/66lbs
Load Tested	3 times weight capacity approved
Compatible VESA Patterns	50x50mm, 75x75mm, 100x100mm, 200x100mm, 200x200mm
Maximum VESA Pattern	200x200mm
Maximum Hole Pattern	210x210mm
Minimum Hole Pattern	80x200mm
Tilt	-15°~+5°
Profile	57mm

Technical Drawing

